

W
O
N
A
G
E
L
E

DETACHED VILLAS

L O M A S D E M A R B E L L A C L U B

LOCATION

Sophisticated 4 detached villas are located in a prestigious urbanization on the Golden Mile - **Lomas de Marbella Club**.

It is one of the most popular luxury residential areas in Marbella, maintaining its elegant and original appearance, with spacious and perfect green areas, 24 hour security, quality of life and architecture.

The urbanization is located 10 minutes from the center of Marbella, 40 km from Malaga International Airport, 50 km from the AVE station and 85 km from Gibraltar Airport.





Its location north of the Golden Mile, in front of Puente Romano and near the Royal Mosque with its impressive Andalusian Arabic architecture, makes it a privileged area.

This urbanization welcomes all kinds of local and international celebrities, Spanish nobles and European elites, being a very exclusive urbanization with the most expensive villas and mansions in the area.

On the other hand, the urbanization is close to a mythical 5* hotel, Michelin star restaurants, numerous golf courses and international schools, Marbella and Puerto Banús. Wide variety of fashion boutiques, restaurants and nightlife.





DETACHED VILLAS
LOMAS DE MARBELLA CLUB

PUERTO BANÚS

GOLF COURSE
DAMA DE NOCHE

HOTEL
PUENTE ROMANO
🚶 10 min

HOTEL
MARBELLA CLUB

MARBELLA



DETACHED VILLAS

LOMAS DE MARBELLA CLUB

- 6 BEDROOMS
- 6 BATHROOMS
- 2 TOILETS
- SOLARIUM
- GYM
- LAUNDRY ROOM
- DIRTY KITCHEN
- GARAGE
- SALTWATER SWIMMING POOL
- BIG TERRACES

VILLA	PLOT	BUILD	TERRACE	PRICE
VILLA 1	1489 m²	615 m²	343 m²	SOLD
VILLA 2	1441 m²	647 m²	284 m²	6.400.000 €

VILLA	PLOT	BUILD	TERRACE	PRICE
VILLA 3	1442 m²	647 m²	284 m²	6.500.000 €
VILLA 4	1492 m²	641 m²	364 m²	6.750.000 €



Beauty, elegance and comfort characterize these south-facing villas, both classic and modern in appearance, with superior qualities and exceptional materials.

Each villa has an elevated position that, together with its orientation, offers a beautiful view of both the sea and La Concha mountain.

The heated saltwater pool has both a covered and uncovered terrace and a stylish hammock area that invites you to enjoy the good weather of Marbella with family and friends and also the privacy of the plot.





Every villa has a garden that surrounds her, with green areas and decorated with a variety of floral plants and palm trees that give color and movement.

Entering the villa, there is a very spacious outdoor parking decorated with a water fountain that gives an elegant touch and character to the entrance.









INTERIOR

The villa is well proportioned in terms of layout, spread over 3 levels and a solarium to create an exquisitely tasteful 6-bedroom residence with multiple entertaining areas.

Access to the villa is impressive thanks to its double height ceiling and large contemporary pillars. Entering the villa, the main floor has a large space divided into several areas, one of them with a large fireplace, dining area and living area.



HALL





LIVING ROOM







KITCHEN

The fully equipped kitchen with outstanding appliances has a custommade island. The entire floor has access to the terraces, garden and pool, with areas to relax and have fun.





MASTER BEDROOM

The upper floor consists of 3 bedrooms with bathrooms en suite. The master bedroom with access to the large terrace has a spectacular view of the pool and the sea.







MASTER BATHROOM









MASTER DRESSING ROOM





BASEMENT BEDROOM



The attractive basement has 3 more bedrooms with natural light, perfect for guests.









GARAGE



Also, in the basement there are parking space for 3 cars, a laundry area and a staff apartment with a dirty kitchen and direct elevator access to the kitchen on the main floor.





TERRACE

In addition to the entertaining areas in the garden, on the top floor of the house there is a solarium with space for an outdoor gym with glass curtains and fabulous covered and uncovered lounge areas. This floor has privileged views of the sea thanks to its height.



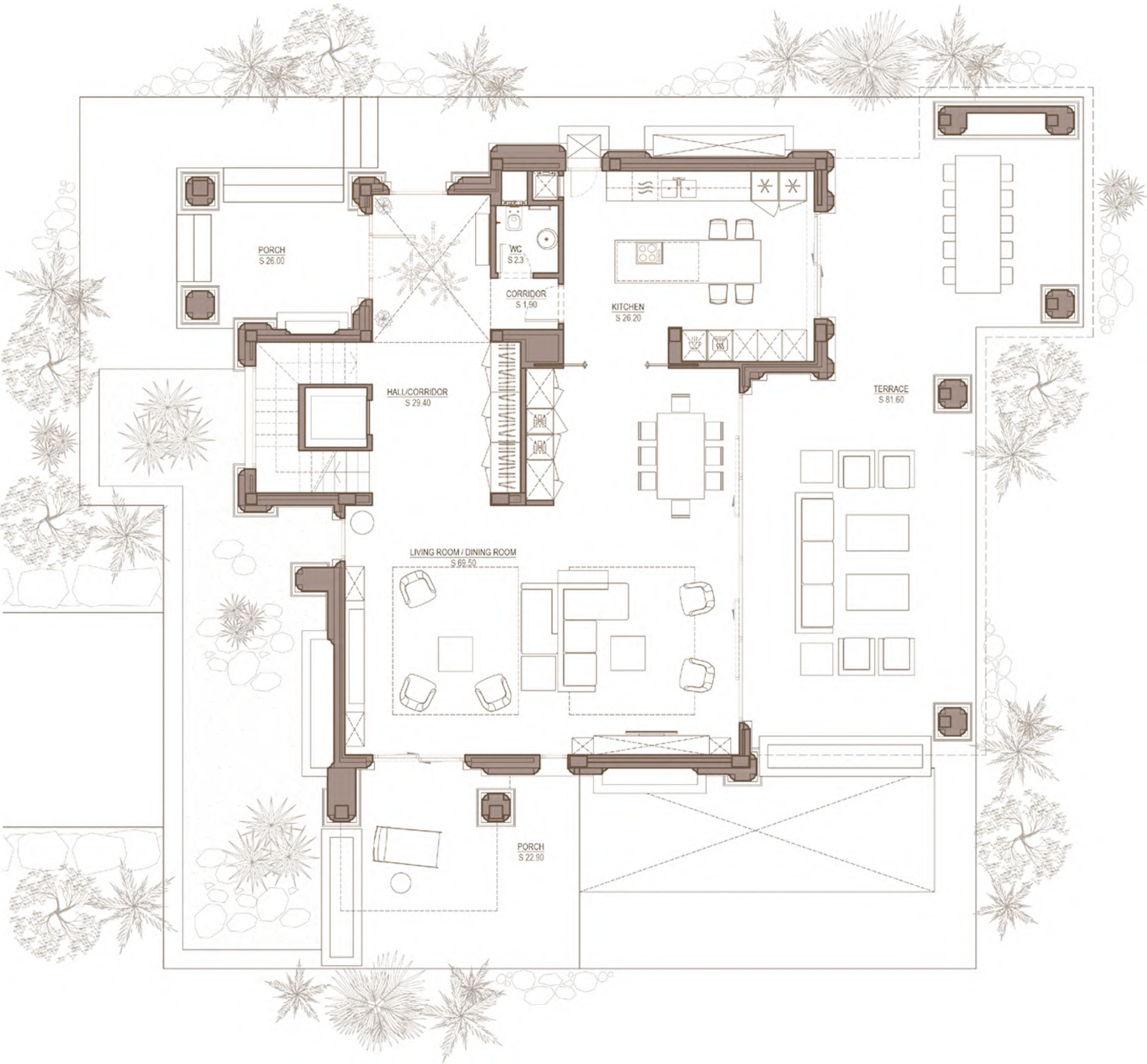


DETACHED VILLAS

LOMAS DE MARBELLA CLUB

GROUND FLOOR

NAME	BUILD
Hall/Corridor	29.4 m²
Living Room/Dining	69.5 m²
Corridor	1.9 m²
WC	2.3 m²
Kitchen	26.2 m²
Porch	48,9 m²
Terrace	81,6 m²
TOTAL	259.8 m²



FIRST FLOOR

NAME	BUILD
Vestibule	16.6 m²
Second Light	9.5 m²
Vestibule	3.1 m²
Bathroom	4.5 m²
Bedroom	16.6 m²
Terrace	7.1 m²
Vestibule	7.9 m²
Dressing Area	10.6 m²
Master Bedroom	24.1 m²
Master Bathoom	15.1 m²
Vestibule	8.2 m²
Bedroom	18.0 m²
Bathroom	4.7 m²
Terrace	53.5 m²
TOTAL	199.5 m²

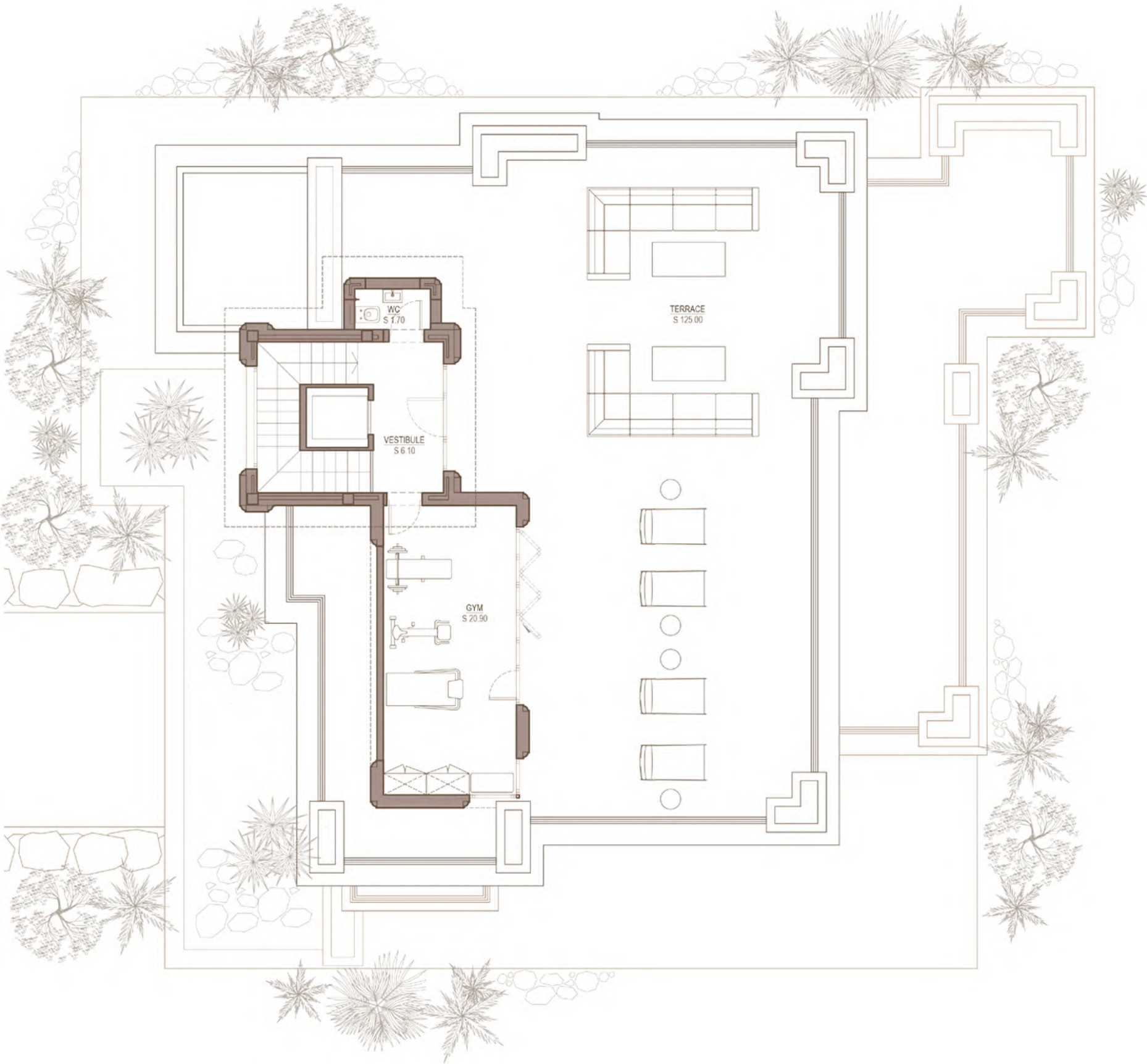


DETACHED VILLAS

LOMAS DE MARBELLA CLUB

ROOFTOP FLOOR

NAME	BUILD
Vestibule	6.1 m ²
WC	1.7 m ²
Gym	20.9 m ²
Terrace	125 m ²
TOTAL	153.7 m ²



BASEMENT

NAME	BUILD
Hall	10.2 m ²
Corridor	9.3 m ²
Bathroom	7.9 m ²
Corridor	6.4 m ²
Laundry	18.9 m ²
Staff Kitchen Room	12.6 m ²
Living Room/Bedroom	21.7 m ²
Wardrobe	2.2 m ²
Bathroom	3.6 m ²
Vestibule	3.4 m ²
Bedroom	23.5 m ²
Vestibule	5.7 m ²
Bedroom	23.4 m ²
Bathroom	8.7 m ²
Technical room	18.3 m ²
Garage	74.6 m ²
Porch	9.5 m ²
TOTAL	259.9 m ²
TOTAL AREA OF THE TERRACE	325.6 m ²
TOTAL AREA OF THE HOUSE	547.3 m ²



DETACHED VILLAS

LOMAS DE MARBELLA CLUB